

# RUBAROC

**A DURABLE, FLEXIBLE SURFACE**  
Bounces like rubber - wears like rock.



## Testing

Canine urine was applied over a 180mm circle of Rubaroc and allowed to dry for 48hours. This stain was removed with cold water. No hand scrubbing or cleaning was required. After air drying for 24 hours, there was no staining observed by the technician - PASS

Hardness - PASS

Water Absorption - PASS

Hydrolyptic Stability - PASS

Ultraviolet Resistance - PASS

Hardness - 95%

Water Absorption - +5.8%

Fungal Growth - No Growth

Bacterial Resistance - No Growth

Slip Rating - P5 - PASS

Fire Rating - PASS

**Want to know more?**

Call Rubaroc on (03) 9874-7133

[enquiries@rubaroc.com.au](mailto:enquiries@rubaroc.com.au)

(03) 9874-7133

[www.rubaroc.com.au](http://www.rubaroc.com.au)

# SAFE SLIP RESISTANT AQUA SURFACE

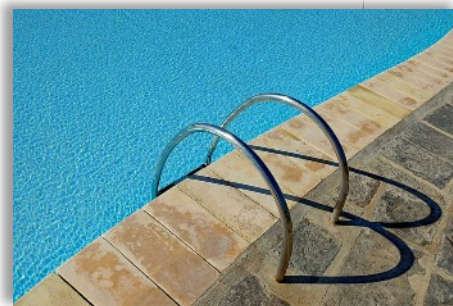
**RUBAROC**  
**A DURABLE, FLEXIBLE SURFACE**  
Bounces like rubber - wears like rock.

(03) 9874-7133 [enquiries@rubaroc.com.au](mailto:enquiries@rubaroc.com.au) [www.rubaroc.com.au](http://www.rubaroc.com.au)



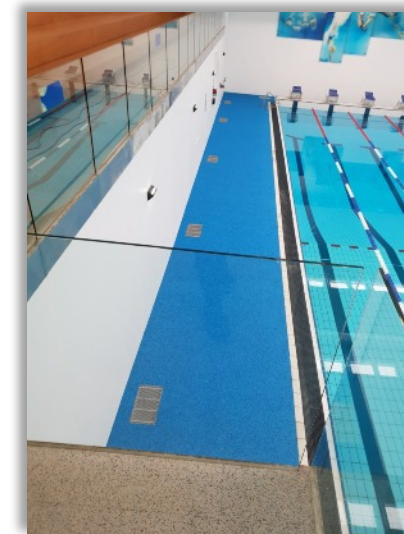
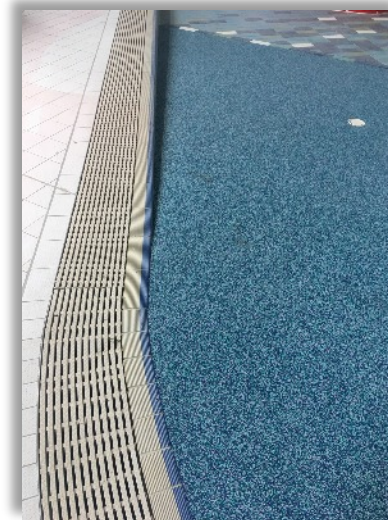
# RUBAROC

A DURABLE. FLEXIBLE SURFACE  
Bounces like rubber - wears like rock.



## Our Pictures Say it All!

At Rubaroc, we're proud to showcase some of our longstanding work. Rubaroc Safety Surfaces are used in a wide variety of aquatic establishments from high end public facilities and leisure centres to complex colourful outdoor aquatic designs. We are happy to work with you to achieve your surface design goals.



## We're Ready, are you?

As leading installers of wet pour rubber in Australia, we know exactly what it takes to complete your rubber surfacing project.

Rubaroc combines more than 26 years experience in the field of wet pour rubber surface solutions.

We combine high-tech aliphatic resin and rubber granules to create a vibrant, resilient, anti-slip and safe surface that is versatile and virtually indestructible.

Professionally installed over your existing surface, Rubaroc expands and contracts to accommodate temperature changes and ground movement.

**There is simply no other surface like it.**

Available in many different colours, Rubaroc is the perfect solution to most surface problems.

Rubaroc has been installed in aquatic establishments including indoor and outdoor facilities, Olympic pools, splash pads, toddler pools, pool surrounds, etc.

Rubaroc is mixed on site and hand trowelled by our specialist installation team at a uniform thickness over your existing surface to create a beautiful, seamless finish.

Rubaroc can be used creatively for custom patterns and designs and can be applied to angular surfaces like steps and stairways, or curved surfaces like such as coving or cantilever.

**Safety is important...**

**Rubaroc is anti-slip when wet  
Providing added safety for everyone.**

A Rubaroc surface has the ability to stretch to accommodate most substrate cracks caused by ground movement, also expanding and contracting with temperature changes.

Rubaroc bonds directly to any solid substrate material including concrete, asphalt, 6% stabilized crushed rock, epoxy stone, brick, wood, steel, tarmac and aluminium.

Rubaroc is specially suited to high traffic environments assisting in eliminating noise and providing comfort.

Rubaroc is stain resistant and cleans easily with normal soap and water.

The manufacturer provides a two year guarantee against defective materials. Your installation specialist will provide a two year labour guarantee.

**Call the Rubaroc team on  
(03) 9874-7133 with your surface  
enquiry.**

### Ready to get started?

**Sounds good, lets talk it over (03) 9874-7133**