



Testing

Canine urine was applied over a 180mm circle of Rubaroc and allowed to dry for 48hours. This stain was removed with cold water. No hand scrubbing or cleaning was required. After air drying for 24 hours, there was no staining observed by the technician - PASS

Hardness - PASS

Water Absorption - PASS

Hydrolyptic Stability - PASS

Ultraviolet Resistance - PASS

Hardness - 95%

Water Absorption - +5.8%

Fungal Growth - No Growth

Bacterial Resistance - No Growth

Slip Rating - P5 - PASS

Fire Rating - PASS

Want to know more?

Call Rubaroc on (03) 9874-7133

enquiries@rubaroc.com.au

t (03) 9874-7133

www.rubaroc.com.au

SAFE SLIP RESISTANT PATH SURFACE

RUBAROC

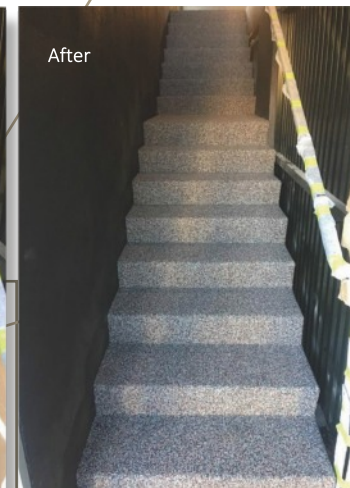
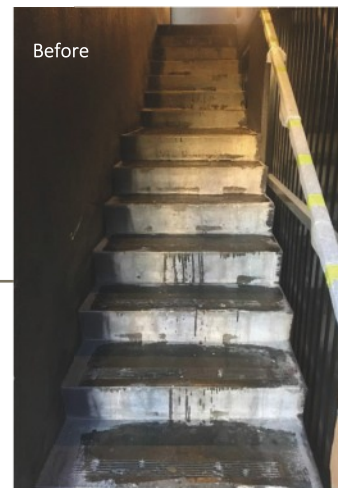
A DURABLE, FLEXIBLE SURFACE
Bounces like rubber - wears like rock.

(03) 9874-7133 enquiries@rubaroc.com.au www.rubaroc.com.au



Our Pictures Say it All!

At Rubaroc, with 26 years' experience, we're proud to showcase some of our longstanding work. Rubaroc Safety Surfaces are installed throughout Australia. One of the main applications is pathways which are slip resistant and hold a P4/P5 Slip rating, however Rubaroc can be used in a number of other areas, ensuring maximum safety for everyone.



We're Ready, are you?

As leading installers of wet pour rubber in Australia, we know exactly what it takes to complete your rubber surfacing project.

Rubaroc combines high-tech polymer resins with rubber to create a resilient, anti-slip and safe surface that is versatile and virtually indestructible.

Professionally installed over your existing surface, Rubaroc expands and contracts to accommodate temperature changes and ground movement.

There is simply no other surface like it.

Available in many different colours, Rubaroc is the perfect solution to most surface problems.

Rubaroc has been installed in a wide variety of projects with numerous applications. Let your imagination run with this magnificent product.

Rubaroc is mixed on site and trowelled by our specialist installation team at a uniform thickness over your existing surface to create a beautiful, seamless finish.

Rubaroc can be used creatively for custom patterns and designs.

Rubaroc can be applied to angular surfaces like steps and stairways, or curved surfaces such as coving or cantilever.

Safety is important
Rubaroc pathways are anti-slip when wet providing added safety for everyone.

Rubaroc stretches to accommodate most substrate cracks caused by ground movement. It will also expand and contract with temperature changes.

Rubaroc bonds directly to any solid substrate material including concrete, asphalt, 6% stabilized crushed rock, epoxy stone, brick, wood, steel, tarmac and aluminium.

Rubaroc is specially suited to high traffic environments assisting in eliminating noise and providing comfort.

Rubaroc is stain resistant and cleans easily with normal soap and water.

The manufacturer provides a two year guarantee against defective materials. Your installation specialist will provide a two year labour guarantee.

Call the Rubaroc team on (03) 9874-7133 with your surface enquiry.

Ready to get started?

Sounds good, lets talk it over (03) 9874-7133